

**Chapter 7 Cell Structure and Function**

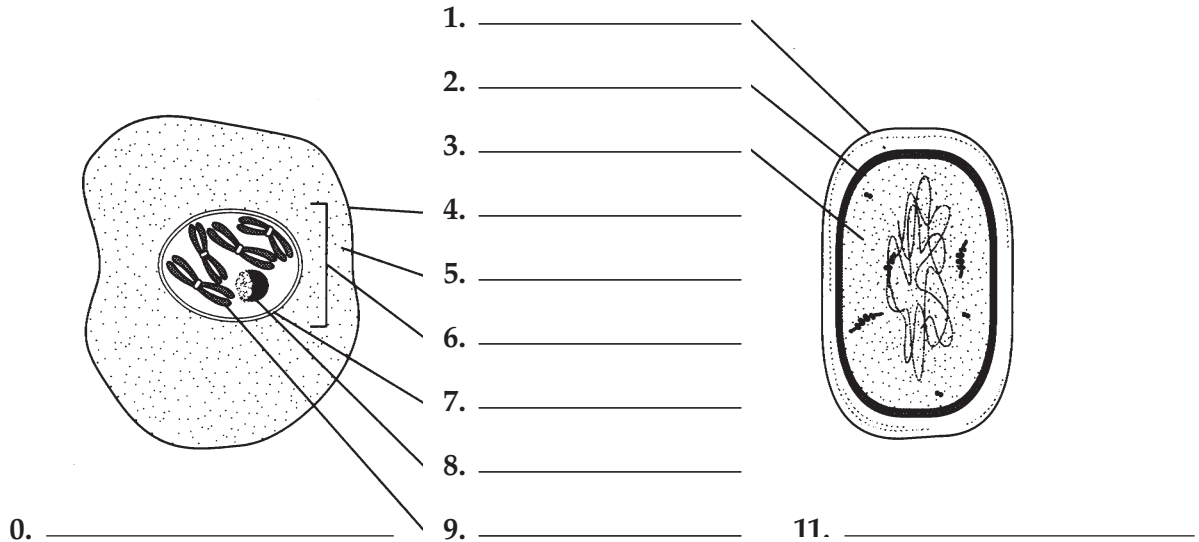
**Vocabulary Review**

**Labeling Diagrams** Use the words listed below to label the parts of these cells. Some words will be used twice. On the line below each cell, identify the cell as either a prokaryote or a eukaryote.

cell membrane  
cell wall  
chromosome

cytoplasm  
nuclear envelope

nucleolus  
nucleus



**Matching** In the space provided, write the letter of the function that best matches each organelle.

- |                                 |   |
|---------------------------------|---|
| _____ 12. mitochondrion         | a. site where lipid components of cell membrane are assembled         |
| _____ 13. ribosome              | b. captures energy from sunlight and converts it into chemical energy |
| _____ 14. endoplasmic reticulum | c. modifies, sorts, and packages proteins                             |
| _____ 15. Golgi apparatus       | d. site where proteins are assembled                                  |
| _____ 16. lysosome              | e. converts chemical energy in food into compounds the cell can use   |
| _____ 17. chloroplast           | f. acts as the cell's cleanup crew                                    |

**Completion** Fill in the blanks with terms from Chapter 7.

18. In the process of \_\_\_\_\_, a protein channel helps the diffusion of glucose across a membrane.
19. The diffusion of water through a selectively permeable membrane is called \_\_\_\_\_.
20. The process that moves materials through a membrane against a concentration difference is known as \_\_\_\_\_.