


## Section 32–3 Primates and Human Origins (pages 833–841)

 **TEKS FOCUS:** 3A Analyze hypotheses; 7A Fossil evidence of change in species; 7B Natural selection and phylogeny; **TEKS SUPPORT:** 7A DNA sequences, anatomical similarities

*This section describes the characteristics shared by all primates and the evolutionary history of primates. It also tells about the ancestors of humans.*

### What Is a Primate? (pages 833–834)

1. What characteristic distinguished the first primates from other mammals? \_\_\_\_\_  
 \_\_\_\_\_  
 \_\_\_\_\_
2. List four adaptations that are shared by primates.
  - a. \_\_\_\_\_
  - b. \_\_\_\_\_
  - c. \_\_\_\_\_
  - d. \_\_\_\_\_
3. Circle the letter of each sentence that is true about primates.
  - a. Primates are well adapted to a life of running on the ground.
  - b. Many primates can hold objects firmly in their hands.
  - c. A well-developed cerebrum enables primates to display elaborate social behaviors.
  - d. Because primates have a flat face, both eyes point to the sides.
4. What is binocular vision? \_\_\_\_\_  
 \_\_\_\_\_  
 \_\_\_\_\_  
 \_\_\_\_\_

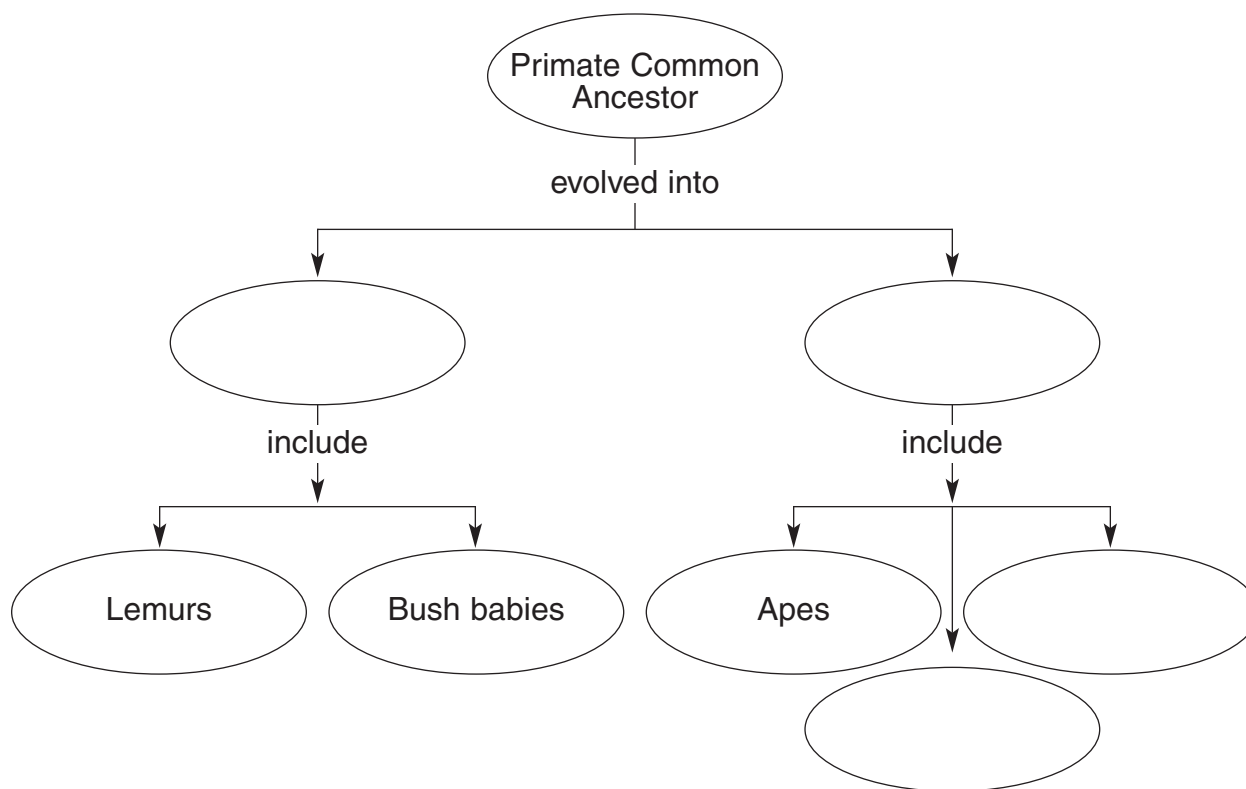
### Evolution of Primates (pages 834–835)

5. Circle the letter of each characteristic of prosimians.
  - a. nocturnal      b. diurnal      c. small in size      d. small eyes

*Match the characteristics to the anthropoid group. Each anthropoid group may be used more than once.*

Characteristic	Anthropoid Group
_____ 6. Found today in Central and South America	a. New World monkeys
_____ 7. Found today in Africa and Asia	b. Old World monkeys
_____ 8. Includes baboons and macaques	
_____ 9. Includes squirrel monkeys and spider monkeys	
_____ 10. Lack prehensile tails	
_____ 11. Long, prehensile tails and long, flexible arms	

12. Complete the concept map to show the evolution of primates.



13. The anthropoid group that includes Old World monkeys also includes the great apes, or \_\_\_\_\_.

### Hominid Evolution (pages 835–838)

14. What was the importance of bipedal locomotion that evolved in the hominid family?

---



---

15. The hominid hand evolved a(an) \_\_\_\_\_ thumb that enabled grasping objects and using tools.

16. Is the following sentence true or false? Hominids have a much larger brain than the other hominoids, such as chimpanzees. \_\_\_\_\_

17. Is the following sentence true or false? Only one fossil species exists that links humans with their nonhuman primate ancestors. \_\_\_\_\_

18. Circle the letter of each characteristic of the hominid genus *Australopithecus*.

- a. bipedal apes
- b. never lived in trees
- c. fruit eaters
- d. very large brains

- 19. Is the following sentence true or false? Fossil evidence shows that hominids walked bipedally long before they had large brains. \_\_\_\_\_
- 20. Based on their teeth, what kind of diet did the known *Paranthropus* species probably eat?  
\_\_\_\_\_
- 21. Is the following sentence true or false? Currently, researchers completely understand the evolution of the hominid species. \_\_\_\_\_

**The Road to Modern Humans** (pages 839–840)

- 22. *Homo habilis* was found with tools made of \_\_\_\_\_.
- 23. Describe the two hypotheses that explain how modern *Homo sapiens* might have evolved from earlier members of the genus *Homo*.
  - a. \_\_\_\_\_
  - b. \_\_\_\_\_

**Modern *Homo sapiens*** (page 841)

- 24. Circle the letter of each characteristic of Neanderthals.
  - a. stone tools
  - b. lived in social groups
  - c. gave rise to *H. sapiens*
  - d. made cave paintings
- 25. Is the following sentence true or false? Neanderthals and *Homo sapiens* lived side-by-side for around 50,000 years. \_\_\_\_\_
- 26. What fundamental changes did some populations of *H. sapiens* make to their way of life around 50,000–40,000 years ago? \_\_\_\_\_  
\_\_\_\_\_  
\_\_\_\_\_