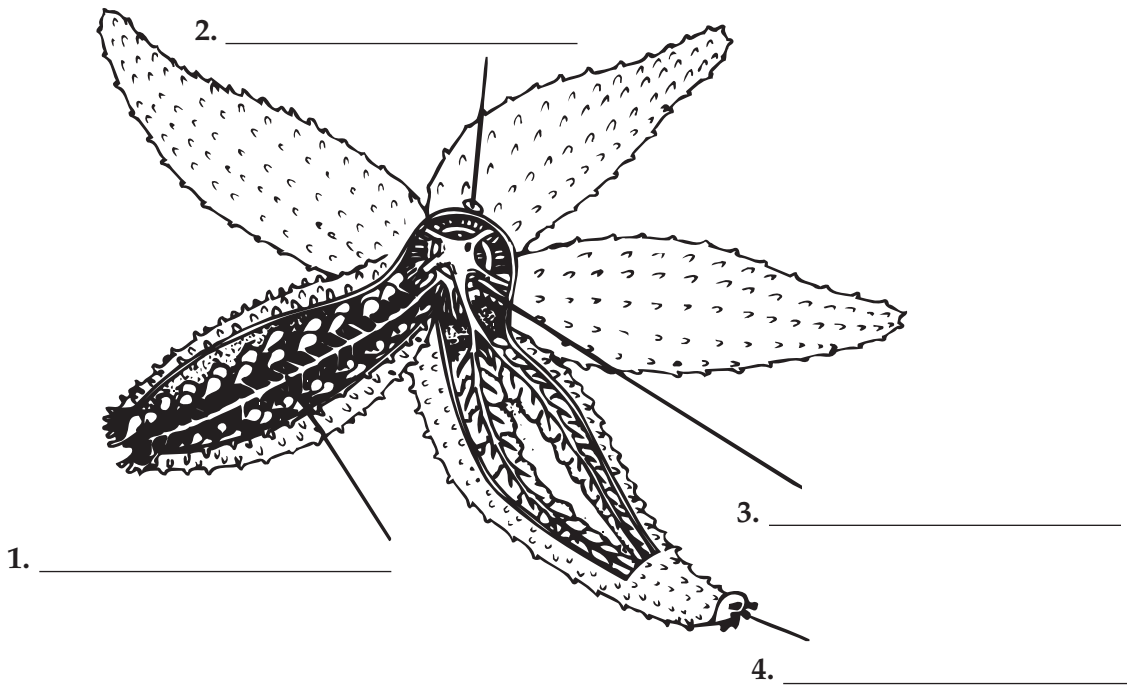


Chapter 28 Arthropods and Echinoderms

Vocabulary Review

Labeling Diagrams Use terms from Chapter 28 to label the diagram below.



Completion Fill in the blanks with terms from Chapter 28.

5. A(An) _____ is a tough external covering of the body.
6. A structure that extends from the body wall of an arthropod is called a(an) _____.
7. The chewing mouthparts of crustaceans are called _____.
8. Chelicerates have _____ pairs of walking legs.
9. Arachnids include mites, ticks, scorpions, and _____.
10. Insects have a body divided into three parts—a head, a(an) _____, and an abdomen.
11. In complete metamorphosis, the stage in which an insect changes from larva to adult is called a(an) _____.
12. Specific chemical messengers that affect the behavior or development of individuals of the same insect species are called _____.
13. A(An) _____ is an internal skeleton.
14. Most echinoderms exhibit five-part _____ symmetry.