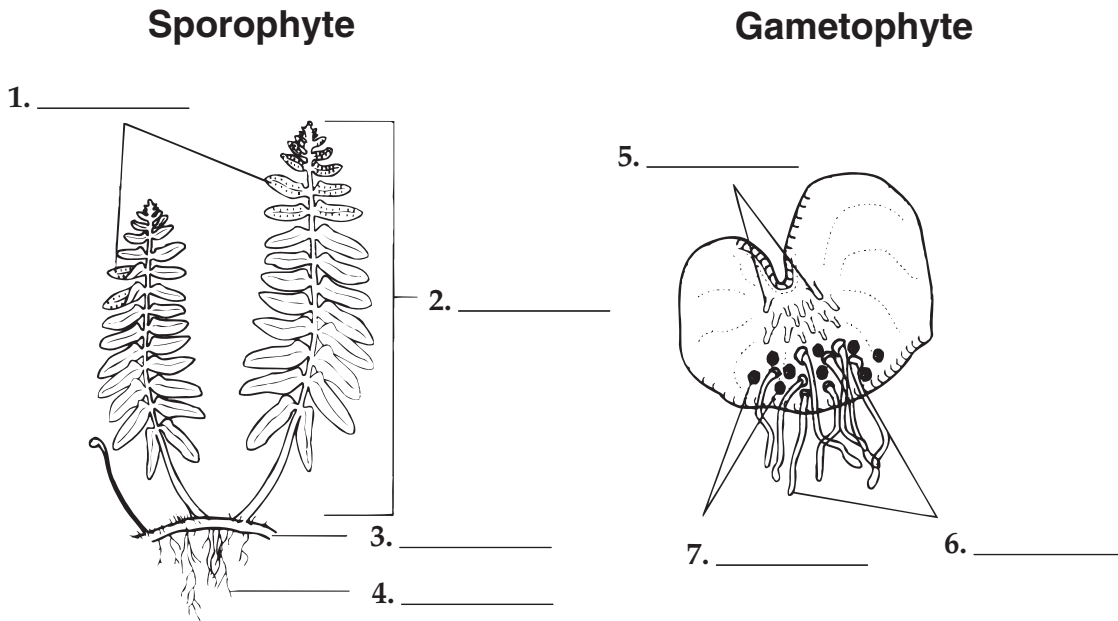


Chapter 22 Plant Diversity

Vocabulary Review

Labeling Diagrams Use the following words to label the diagrams of the stages in a fern's life cycle: antheridia, archegonia, frond, rhizoid, rhizome, root, sori.



Completion Fill in the blanks with terms from Chapter 22.

8. A(An) _____ is the diploid phase of the plant life cycle.
9. A(An) _____ produces seeds directly on the surface of cones.
10. The seed-bearing structures of angiosperms are _____.
11. The transfer of pollen from the male to the female reproductive structures is called _____.
12. A(An) _____ is a plant embryo with its food supply that is protected by a seed coat.
13. The _____ is a wall of tissue surrounding the seed.
14. An angiosperm that has one cotyledon, or seed leaf, is called a(an) _____.
15. Flowering plants that complete an entire life cycle within one growing season are called _____.