

## Chapter 21 Fungi

### Section 21-1 The Kingdom Fungi (pages 527-529)



**TEKS FOCUS:** 8C Characteristics of fungi

*This section describes the defining characteristics of fungi. It also describes the internal structure of a fungus and explains how fungi reproduce.*

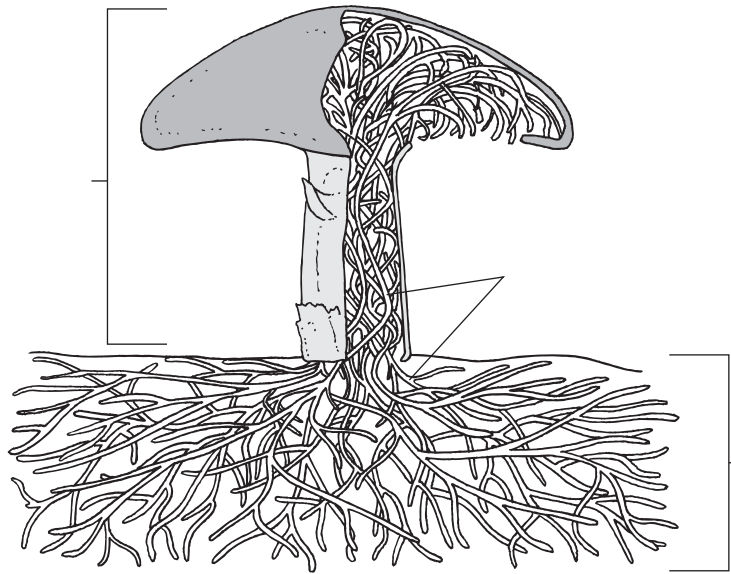
#### What Are Fungi? (page 527)

1. Circle the letter of each sentence that is true about fungi.
  - a. They are heterotrophs.
  - b. They have cell walls.
  - c. They are photosynthetic.
  - d. They are eukaryotic.
2. The cell walls of fungi are made of a complex carbohydrate called \_\_\_\_\_.
3. How do fungi digest their food? \_\_\_\_\_  
\_\_\_\_\_
4. Is the following sentence true or false? Some fungi are parasites. \_\_\_\_\_

#### Structure and Function of Fungi (pages 527-528)

5. Which group of fungi are not multicellular? \_\_\_\_\_
6. What are hyphae? \_\_\_\_\_  
\_\_\_\_\_
7. How thick is each hypha? \_\_\_\_\_
8. In some fungi, what divides the hyphae into cells containing one or two nuclei?  
\_\_\_\_\_
9. What is a mycelium? \_\_\_\_\_  
\_\_\_\_\_  
\_\_\_\_\_
10. Why is a mycelium well suited to absorb food? \_\_\_\_\_  
\_\_\_\_\_  
\_\_\_\_\_
11. What is a fruiting body of a fungus? \_\_\_\_\_  
\_\_\_\_\_  
\_\_\_\_\_
12. What is a fairy ring, and why does it form? \_\_\_\_\_  
\_\_\_\_\_  
\_\_\_\_\_

13. Label the parts of the fungus.



**Reproduction in Fungi** (pages 528–529)

14. Is the following sentence true or false? Most fungi can only reproduce asexually.

\_\_\_\_\_

15. How does asexual reproduction occur in fungi? \_\_\_\_\_

\_\_\_\_\_  
\_\_\_\_\_  
\_\_\_\_\_

16. In some fungi, spores are produced in structures called \_\_\_\_\_.

17. Where are sporangia found in a fungus? \_\_\_\_\_

\_\_\_\_\_  
\_\_\_\_\_

18. Sexual reproduction in fungi usually involves two different \_\_\_\_\_.

19. What is a gametangium? \_\_\_\_\_

\_\_\_\_\_  
\_\_\_\_\_  
\_\_\_\_\_

20. How does a zygote form in fungal sexual reproduction? \_\_\_\_\_

\_\_\_\_\_  
\_\_\_\_\_  
\_\_\_\_\_  
\_\_\_\_\_

21. Circle the letter of each sentence that is true about sexual reproduction in fungi.
- a. The zygote is often the only diploid cell in the fungus's entire life cycle.
  - b. Mating types are called male and female.
  - c. Gametes of both mating types are about the same size.
  - d. One mating type is a "+" (plus) and the other is a "-" (minus).

**How Fungi Spread** (page 529)

22. Why do molds seem to grow in any location that has the right combination of moisture and food? \_\_\_\_\_  
\_\_\_\_\_  
\_\_\_\_\_

23. Is the following sentence true or false? The spores of many fungi scatter easily in the wind. \_\_\_\_\_

24. For a fungal spore to grow, where must it land? \_\_\_\_\_  
\_\_\_\_\_  
\_\_\_\_\_  
\_\_\_\_\_